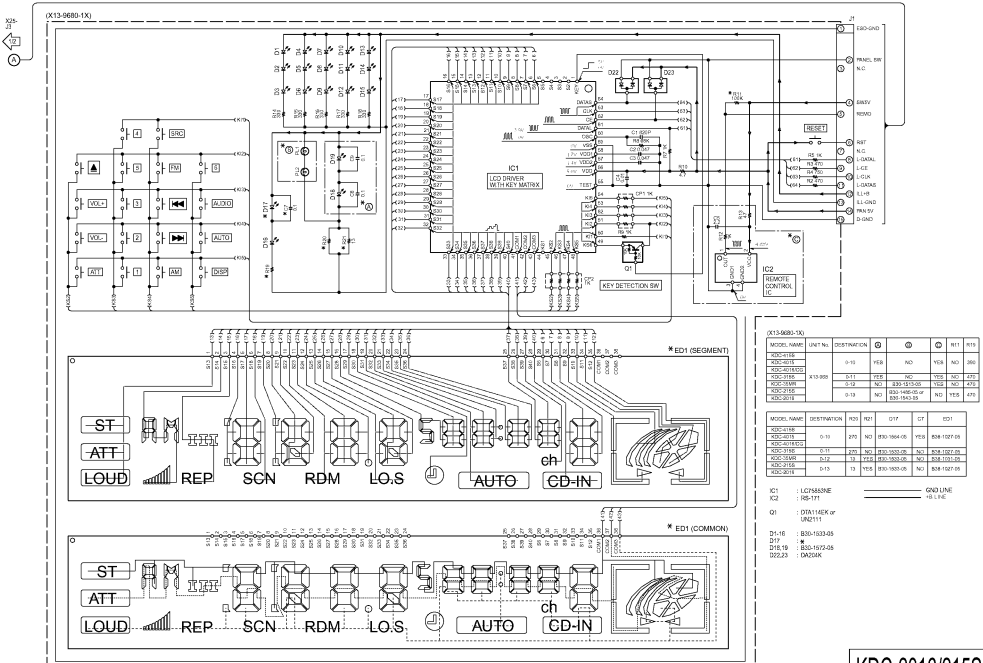


K1	* TCAN15SD	D1	32015-13,153-10	SDC16-A
K2	1P17153846	D2	32015-13,153-10	AN17153846-21
K3	1P17153846	D3	32015-13,153-10	MAK50215-06
K4	1P17153846	D4	32015-13,153-10	MAK50215-06
K5	1P17153846	D5	32015-13,153-10	MAK50215-06
K6	1P17153846	D6	32015-13,153-10	MAK50215-06
K7	1P17153846	D7	32015-13,153-10	MAK50215-06
K8	1P17153846	D8	32015-13,153-10	MAK50215-06
K9	1P17153846	D9	32015-13,153-10	MAK50215-06
K10	1P17153846	D10	32015-13,153-10	MAK50215-06
K11	1P17153846	D11	32015-13,153-10	MAK50215-06
K12	1P17153846	D12	32015-13,153-10	MAK50215-06
K13	1P17153846	D13	32015-13,153-10	MAK50215-06
K14	1P17153846	D14	32015-13,153-10	MAK50215-06
K15	1P17			



(X13-9680-1X)

MODEL NAME	UNIT No.	DESTINATION	①	②	③	④	R11	R19
KDC-1156		0-10	YES	NO	YES	NO	260	
KDC-2016								
KDC-1155	X13-980	0-11	YES	NO	YES	NO	270	
KDC-2156		0-10	NO	YES	YES	NO	270	270
KDC-2018		0-10	NO	YES	YES	NO	270	270

(X13-9680-1X)

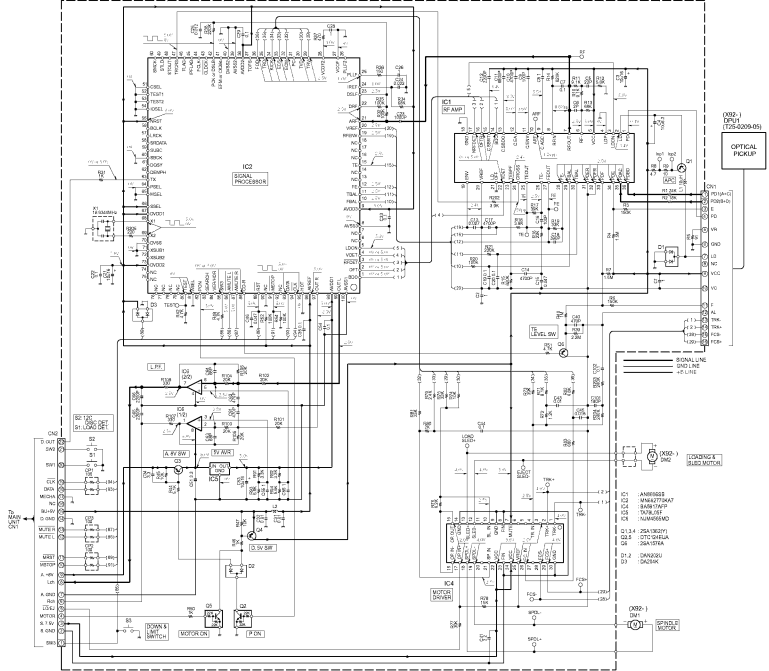
MODEL NAME	DESTINATION	Y03	Y01	D17	Q1	ED1
KDC-1156	0-10	270	NO	850-1964-05	YES	808-1027-05
KDC-1155	0-11	270	NO	850-1962-05	NO	808-1027-05
KDC-2016	0-12	13	YF0	850-1963-05	NO	808-1010-05
KDC-2018	0-13	13	YES	850-1963-05	NO	808-1027-05

- IC1 : LC75558NE
 - IC2 : DS1317
 - Q1 : DT11MEK or UN2111
- D1-16 : B30-1523-05
 D17 : B30-1572-05
 D22,23 : DA258K

CAUTION: For continued safety, replace safety critical components only with manufacturer's recommended parts (refer to parts list).
 ⚠ Indicates safety critical components. To reduce the risk of electric shock, leakage current or resistance measurements shall be carried out (exposed parts are acceptably insulated from the supply circuit) before the appliance is returned to the customer.

• DC voltages are as measured with a high impedance voltmeter. Values may vary slightly due to variations between individual instruments, circuit and units.

CD PLAYER UNIT
DKM-1520 (K32-4930-00)



2SC1740S



TA78L05F



DTA114EK

DTA124EK

DA204K

DTC114YK

DTC124EK

2SA204K

DTC143TK

DTC144EK

PST9130NR

2SA1036K

2SA1362

AN8806SB

2SA1576A

OPTICAL PICKUP
(K32-0209-05)

AN8806SB

2SB1184



AN8806SB

2SB1277



AN8806SB

2SA1037K



DTC124EUA



NJM4565MD



DAN202U



To MAIN UNIT

- IC1 : AM8562S
- IC2 : MM4715KAT
- IC3 : BA9V TR1P
- IC4 : MM4565 MD
- Q1,3,4 : 2SA1037P1
- Q2,5 : DTC124EUA
- Q6 : 2SA1576A
- Q1,2 : DAN202U
- Q3 : 2SA204K

OPT-1
DM1
OPTICAL PICKUP

KDC-2016/215S/35MR

KENWOOD